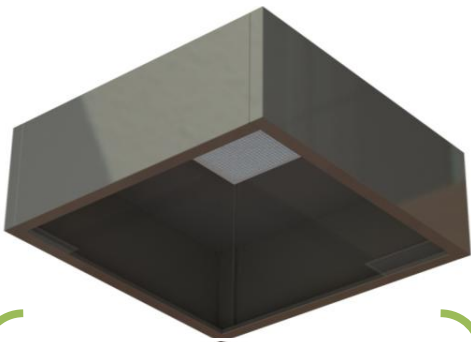




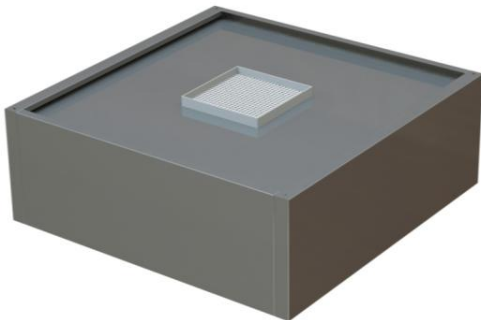
DISHWASH HOOD

AS1668. 2012 has now introduced a requirement for exhaust hoods over commercial dishwashers. Dishwashing machines are opened intermittently and when opened release large volumes of steam, and to prevent condensation build up and uncomfortable working environments 'exhaust hoods are required to be provided for these items.'

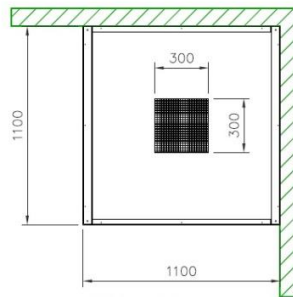


Delta DWE Hoods:

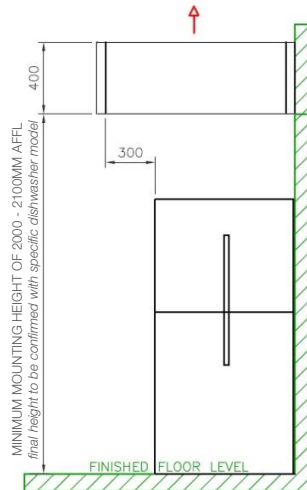
- T304 High Quality Stainless Steel
- Prevents build up of condensation in kitchens & Dishwash areas
- Helps prevent mould growth
- Meets AS1668.2012 requirements
- Prevents discolouration of ceilings & walls.
- Creates comfortable working environments



CORNER DWE HOOD

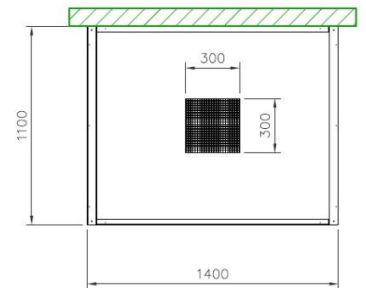


PLAN

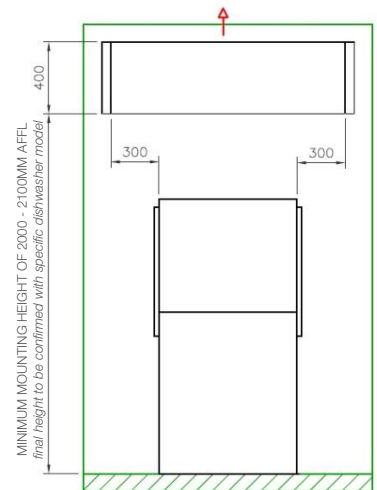


FRONT VIEW

WALL DWE HOOD



PLAN



FRONT VIEW

DWE Hood	Dimensions	Weight	Rec. Extract Vol
Corner	1100L x 1100W x 400H	35KG	363l/s @ 35pa
Wall	1400L x 1100W x 400H	50KG	462l/s @ 35pa

• Specifications are subject to change without notice.